



Willie Marais IV
083 562 8601
willie.iv@love-it.properties



Berni Erasmus - Key Liaison
071 310 9527

enquiries@love-it.properties

Contact Head Office

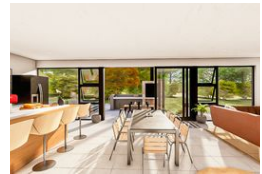
071 3109527

Plot 103 Hennopsvier
Pretoria
0001



ON SHOW

Web Ref RL829



On Show

9:30 to 17:30

Saturday, 15 March 2025

Directions

ON SHOW BY APPOINTMENT

R4,390,000

3 2.5 2

Monthly Bond Repayment R45,313.07

Calculated over 20 years at 11% with no deposit.

Transfer Costs R350,845.00 **Bond Costs** R65,382.50

These calculations are only a guide. Please ask your conveyancer for exact calculations.

Monthly Rates R3,717

Welcome Home to Modern Comfort and Elegance in Fountainbrook Estate near Midstream

LPM24-011.2

Plot & Plan | Building Package

- Concept Plans to choose from or design with Architect.
- Choose between double- or single-story options.
- New homes from R3,5m.
- Building sizes from 200m².
- Stand sizes between 450m² and 850m².
- Clubhouse and private open spaces.
- No transfer duty.
- Directly from the Developer.
- Choose your own finishes.

Looking for the perfect opportunity to craft your ideal home? Look no further!

Fountainbrook Estate welcomes you to our exclusive building package offer, where you have the freedom to design your own dream home within our beautiful development

Features

Pets Allowed Yes

Interior

Bedrooms	3
Bathrooms	2.5
Kitchens	1
Recep. Rooms	2
Furnished	No

Exterior

Garages	2
Security	Yes
Pool	Yes
Views	False

Sizes

Floor Size	221m ²
Land Size	635m ²

Extras

Security Estate New Development