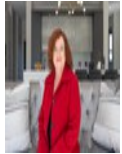




Willie Marais IV
083 562 8601
willie.iv@love-it.properties



Berni Erasmus - Key Liaison
071 310 9527

enquiries@love-it.properties

Contact Head Office

071 3109527

Plot 103 Hennopsrivier
Pretoria
0001



Web Ref RL795



R4,700,000

4 3 2

Monthly Bond Repayment R48,512.85

Calculated over 20 years at 11% with no deposit.

Transfer Costs R367,177.00 **Bond Costs** R59,150.00

These calculations are only a guide. Please ask your conveyancer for exact calculations.

Monthly Levy R1,950 **Monthly Rates** R4,368

Design and build your dream Home in Fountainbrook Estate near Midstream. -LPM23-015.2

- Concept Plans to choose from or design with Architect.
- Choose between double- or single-story options.
- New homes from R3,5m.
- Building sizes from 200m2.
- Stand sizes between 450m2 and 850m2.
- Clubhouse and private open spaces.
- No transfer duty.
- Directly from the Developer.
- Choose your own finishes.

Have you been dreaming of the perfect home? Now is your chance to turn those dreams into reality with our building packages available in the beautiful Fountainbrook Estate.

Design and Build Your Dream Home:

At Fountainbrook Estate, we believe that your home should reflect your dreams and desires. With our professional Development Team at your disposal, you have a unique opportunity to design and build a home that captures your vision. Every phase of the construction process is handled by capable craftsmen...

Features

Pets Allowed Yes

Interior

Bedrooms 4
Bathrooms 3
Kitchens 1
Recep. Rooms 2
Furnished No

Exterior

Garages 2
Security Yes
Dom. Accom. 1
Pool No
Views False

Sizes

Floor Size 280m²
Land Size 450m²

Extras

Security Estate