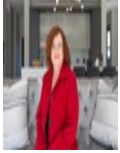




**Willie Marais IV**  
083 562 8601  
willie.iv@love-it.properties



**Berni Erasmus - Key Liaison**  
071 310 9527

enquiries@love-it.properties

Contact Head Office

071 3109527

Plot 103 Hennopsrivier  
Pretoria  
0001



ON SHOW

Web Ref RL790



### On Show

9:00 to 17:00

Friday, 18 April 2025

#### Directions

ON SHOW BY APPOINTMENT

## R4,507,000

5 4.5 2

**Monthly Bond Repayment** R46,520.73

Calculated over 20 years at 11% with no deposit.

**Transfer Costs** R343,779.00 **Bond Costs** R57,265.00

These calculations are only a guide. Please ask your conveyancer for exact calculations.

**Monthly Rates** R3,819.6

### Fountainbrook Estate near Midstream – New Development – LPM23-002.2

#### PLOT & PLAN | BUILDING PACKAGE

- Concept Plans to choose from or design with Architect.
- Choose between double- or single-story options.
- New homes from R3,5m.
- Building sizes from 200m2.
- Stand sizes between 450m2 and 850m2.
- Clubhouse and private open spaces.
- No transfer duty.
- Directly from the Developer.
- Choose your own finishes.

Discover the perfect canvas for your dream home. Embrace the opportunity to build a home that truly reflects your unique taste and lifestyle in this charming new development.

With the building package, you become the master designer of your new home. Collaborate with our...

### Features

**Pets Allowed** Yes

#### Interior

Bedrooms	5
Bathrooms	4.5
Kitchens	1
Recep. Rooms	2
Furnished	No

#### Exterior

Garages	2
Security	Yes
Pool	No
Views	False

#### Sizes

Floor Size	264m <sup>2</sup>
Land Size	453m <sup>2</sup>