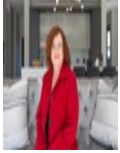




**Willie Marais IV**  
083 562 8601  
willie.iv@love-it.properties



**Berni Erasmus - Key Liaison**  
071 310 9527

enquiries@love-it.properties

Contact Head Office

071 3109527

Plot 103 Hennopsrivier  
Pretoria  
0001



Web Ref RL789



### R4,568,000

4   4.5   2

**Monthly Bond Repayment** R47,150.37

Calculated over 20 years at 11% with no deposit.

**Transfer Costs** R350,489.00   **Bond Costs** R57,265.00

These calculations are only a guide. Please ask your conveyancer for exact calculations.

**Monthly Rates** R3,873.1

Discover Your Dream Home at Fountainbrook Estate near Midstream – LPM23-001.3

Plot & Plan | Building Package

- Concept Plans to choose from or design with Architect.
- Choose between double- or single-story options.
- New homes from R3,5m.
- Building sizes from 200m<sup>2</sup>.
- Stand sizes between 450m<sup>2</sup> and 850m<sup>2</sup>.
- Clubhouse and private open spaces.
- No transfer duty.
- Directly from the Developer.
- Choose your own finishes.

Looking for the perfect opportunity to craft your ideal home? Look no further!

Fountainbrook Estate welcomes you to our exclusive building package offer, where you have the freedom to design your own dream home within our beautiful development.

Great Opportunity to Design Your Own Home

### Features

**Pets Allowed** Yes

#### Interior

Bedrooms	4
Bathrooms	4.5
Kitchens	1
Recep. Rooms	3
Furnished	No

#### Exterior

Garages	2
Security	Yes
Dom. Accom.	1
Pool	No
Views	False

#### Sizes

Floor Size	261m <sup>2</sup>
Land Size	488m <sup>2</sup>

#### Extras

Security Estate