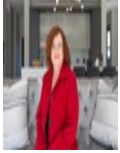




Willie Marais IV
083 562 8601
willie.iv@love-it.properties



Berni Erasmus - Key Liaison
071 310 9527

enquiries@love-it.properties

Contact Head Office

071 3109527

Plot 103 Hennopsrivier
Pretoria
0001



Web Ref RL842



R4,424,000

3 2.5 2

Monthly Bond Repayment R45,664.01
Calculated over 20 years at 11% with no deposit.

Transfer Costs R334,649.00 **Bond Costs** R57,265.00
These calculations are only a guide. Please ask your conveyancer for exact calculations.

Monthly Rates R3,745

Discover Modern Elegance: Your Dream Home Awaits in Fountainbrook Estate near Midstream Estate

LPM24-011.3
Plot & Plan | Building Package

Concept Plans to choose from or design from scratch.
Choose between double- or single-story options.
New homes from R3,5m.
Building sizes from 200m².
Stand sizes between 450m² and 850m².
Special clubhouse and private open space for your convenience.
No transfer duty.

Are you ready to make your dream home a reality? Look no further than Fountainbrook Estate, where your chance to design and build the house you have always wanted awaits you. We are delighted to offer building packages in the prestigious Fountainbrook Estate.

Your Vision, Our Expertise:

Our ready-to-transfer duty and built-to-keep-for-home building With Fountainbrook Estate, you will have the unique

Features

Pets Allowed Yes

Interior

Bedrooms	3
Bathrooms	2.5
Kitchens	1
Recep. Rooms	2
Furnished	No

Exterior

Garages	2
Security	Yes
Pool	No
Views	False

Sizes

Floor Size	224m ²
Land Size	635m ²

Extras

New Development Security Estate