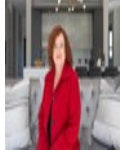




Willie Marais IV
083 562 8601
willie.iv@love-it.properties



Berni Erasmus - Key Liaison
071 310 9527

enquiries@love-it.properties

Contact Head Office

071 3109527

Plot 103 Hennopsrivier
Pretoria
0001



Web Ref RL885



R11,295,000

5 5.5 3

Monthly Bond Repayment R116,585.68

Calculated over 20 years at 11% with no deposit.

Transfer Costs R1,141,487.00 **Bond Costs** R96,474.50

These calculations are only a guide. Please ask your conveyancer for exact calculations.

Monthly Levy R2,164 **Monthly Rates** R10,669

In Construction Marvel in Midstream Ridge

LPM24-053.1

IN CONSTRUCTION

Welcome to your ultimate dream home, where modern design meets luxurious comfort and ample space for entertaining. This exquisite property offers extensive parking, expansive living areas, and beautifully landscaped outdoor spaces, perfect for enjoying life's finest moments.

Key Features:

Expansive Open Plan Living Area: Dining room, open plan kitchen, lounge, and covered patio with built-in braai and countertop, guest bathroom and gaming room

Large Modern Kitchen with Butler's Kitchen and Scullery

5 Bedroom, each with its own bathroom

Private balcony leading to a larger family balcony with gas braai and pizza oven.

Ground Floor:

Upon arrival you'll be greeted by extensive parking options including a unique 2 + 1 garage combination ensuring ample space for

Features

Pets Allowed Yes

Interior

Bedrooms	5
Bathrooms	5.5
Kitchens	2
Recep. Rooms	4
Studies	1
Furnished	No

Exterior

Garages	3
Security	Yes
Dom. Accom.	1
Pool	Yes
Views	True

Sizes

Floor Size	584m ²
Land Size	1,100m ²

Extras

New Development Security Estate Fibre