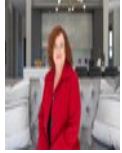




Willie Marais IV
083 562 8601
willie.iv@love-it.properties



Berni Erasmus - Key Liaison
071 310 9527

enquiries@love-it.properties

Contact Head Office

071 3109527

Plot 103 Hennopsrivier
Pretoria
0001



Web Ref RL903



R6,400,000

4 4.5 3

Monthly Bond Repayment R66,060.06
Calculated over 20 years at 11% with no deposit.

Transfer Costs R567,766.00 **Bond Costs** R70,535.00
These calculations are only a guide. Please ask your conveyancer for exact calculations.

Monthly Levy R2,164 **Monthly Rates** R6,000

Elegant Family Home with Spacious Outdoor Area

LPM24-068.1
! NEWLY COMPLETE !

Key Features:

- Triple garage with interior access to the scullery
- Spacious open-plan living area with covered entertainment porch
- Landscaped garden with patio, pool, BOMA, and firepit
- Versatile multi-function room with interior and exterior access
- First-floor PJ lounge with balcony, ensuite bedrooms with private balconies.

Upon arrival, this elegant home greets you with a triple garage that offers convenient interior access directly into the scullery. The beautifully landscaped front garden with carefully placed planters leads to the covered porch, making your approach both scenic and serene.

Step through the front door into the foyer, where the heart of the home unfolds. The living area seamlessly combines a lounge, dining room, and open-plan kitchen, extending to a versatile...

Features

Pets Allowed Yes

Interior

| | |
|--------------|-----|
| Bedrooms | 4 |
| Bathrooms | 4.5 |
| Kitchens | 1 |
| Recep. Rooms | 3 |
| Studies | 0.5 |
| Furnished | No |

Exterior

| | |
|-------------|-------|
| Garages | 3 |
| Security | Yes |
| Dom. Accom. | 1 |
| Pool | Yes |
| Views | False |

Sizes

| | |
|------------|---------------------|
| Floor Size | 340m ² |
| Land Size | 1,009m ² |

Extras

New Development Security Estate Fibre